

PACIFIC
GRANITE



MANUFACTURING

EDGE PROFILES SPECIFICATIONS



Pacific Granite Manufacturing Ltd.

915 Tupper Avenue, Coquitlam, British Columbia, Canada, V3K 1A4

Telephone **1.604.291.2888**

Fax 1.604.291.0488

admin@pacificgranite.ca

COMMON EDGES

WITH 3/4" OR 1 1/4" STONE



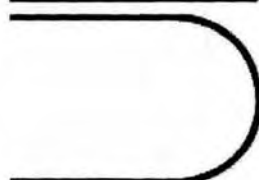
CE #1
STRAIGHT



CE #2
1/4" BEVEL



CE #3
HALF ROUND



CE #4
FULL BULLNOSE



CE #5
1/4" BEVEL TOP
& BOTTOM



CE #6
1/4" RADIUS TOP



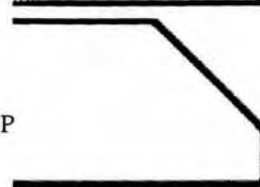
CE #7
1/4" RADIUS TOP
& BOTTOM



CE #8
1/2" BEVEL TOP



CE #9
SEMI BULLNOSE



CE #10
1" BEVEL

CUSTOM EDGES

WITH 3/4" OR 1 1/4" STONE



CU #1
OGEE



CU #9
DUPONT



CU #2
FLAT OGEE



CU #10
COVE DUPONT



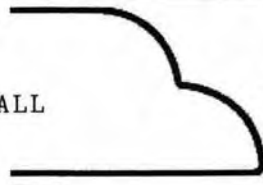
CU #3
OGEE BULLNOSE



CU #11
1/2" OGEE



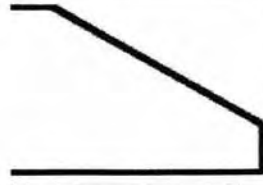
CU #4
TRIPLE WATERFALL



CU #12
DOUBLE BULLNOSE



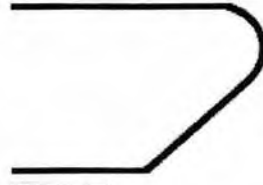
CU #5
COVE



CU #13
1-1/4" BEVEL



CU #6
REVERSE COVE



CU #14
UNDERCUT



CU #7
COVE OGEE



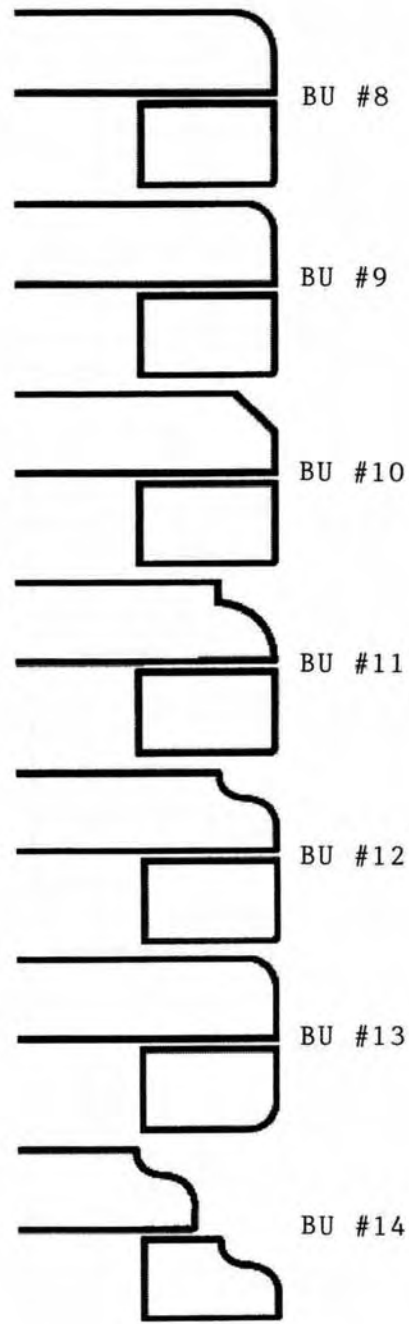
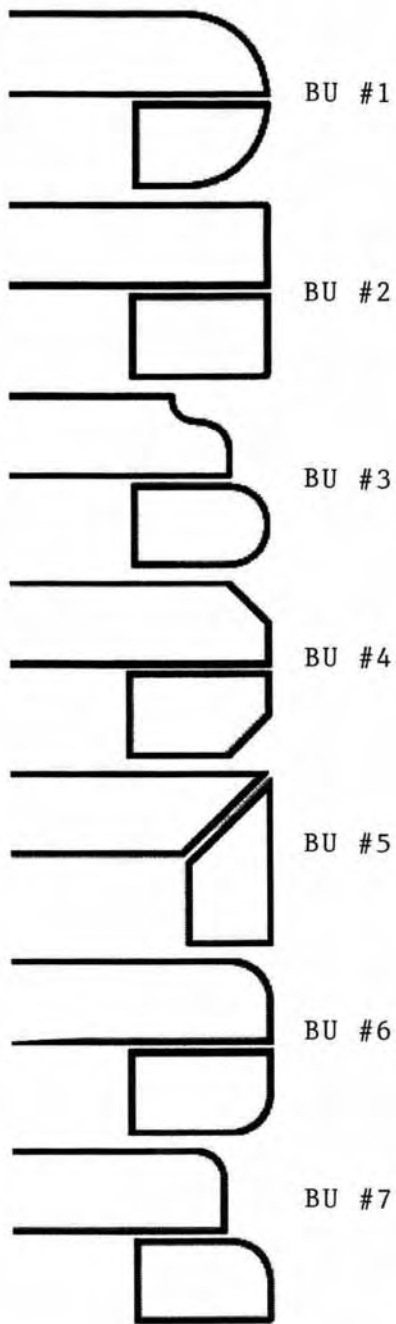
CU #15
1" OGEE



CU #8
COVE BULLNOSE

BUILT-UP EDGES

WITH 3/4" STONE



BUILT-IN EDGES

WITH 3/4" STONE

